



# HOPE

# 2022

## HEMPSTEAD COUNTY

## RELOCATION & TOURISM GUIDE



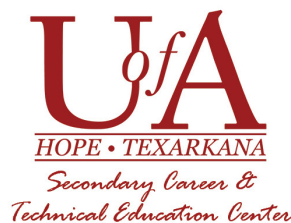


## Why choose UA-Hope Texarkana?

- The #1 most affordable tuition in Arkansas.
- A world-class University of Arkansas System education.
- Over 50 programs of study.
- Over 120 privately funded scholarships.
- Textbook rentals for \$20 per credit hour.
- Quality student services.
- An average 16:1 student to teacher ratio.
- AND MUCH MORE!



The Hope Collegiate Academy is a partnership between Hope High School and UAHT that provides students with a three-year curriculum, allowing them to complete a high school diploma and an associate degree simultaneously. This opportunity is open to students starting in the 10th grade and is free of charge.



The Secondary Career & Technical Education Center provides area high school juniors and seniors with the opportunity to earn college credit while in high school at no charge. The center's curriculum serves as an extension of the high school curriculum, providing students hands-on experiences in a variety of career fields taught by UAHT faculty.



The James Black School of Bladesmithing and Historic Trades celebrates, preserves, and promotes the art of bladesmithing and historic trades and the birth of the iconic Bowie Knife in Historic Washington. Students at the school will study the art and science of Bladesmithing, Forging, Handles and Guards, Damascus Steel, and more.

uaht.edu 870-777-5722



# WELCOME!

## FROM THE HOPE & HEMPSTEAD COUNTY CHAMBER OF COMMERCE

No matter what brings you our way, we are thrilled you are coming! Any day is a great day if you are spending time in Hempstead County!

Our county has many things to offer our visitors: historic attractions, festivals & events, dining, shopping & lodging. For those choosing to relocate to this area, you will discover that Hempstead County residents are proud of their heritage and it shows.

Hempstead County is named for Edward Hempstead, a delegate to the U.S. Congress from the Missouri Territory, which included present-day Arkansas at the time. The county seat is Hope. From a National Park (President William Jefferson Clinton's National Birthplace Site) to a State Park (Historic Washington State Park) and all in between, history is alive and well in our county! Make plans to tour both parks while visiting this area.

While in our community, we encourage you to visit the Paul W. Klipsch Visitors Center that will officially open in March of 2022. The center's location is next door to the Clinton National Site near the heart of downtown Hope.

An additional area attraction is our Hope Visitors Information Center (VIC). The center is in a restored, historic Missouri Pacific Depot located in historic downtown Hope. This site also welcomes thousands of visitors each year due, in part, to AMTRAK.

While visiting the center, you will be able to "read and view" historic documents & pictures. Two well-known leaders from Hope, President William Jefferson Clinton & Governor Mike Huckabee are honored & remembered throughout the visitor's center.

There are three school systems in Hempstead County. They are located in Hope, Spring Hill and Blevins. There are also two private schools, Righteous Oaks School of Ministry and Garrett Memorial Christian School, in the county. We are also fortunate to have the University of Arkansas in Hope as well as in nearby Texarkana!

You will be amazed at the variety of arts and entertainment found in Hempstead County! Festivals and events pay homage to jonquils, watermelons, history & bluegrass. Festival "season" opens in March and continues until the end of the year.

The Hope Downtown Network also offers activities & events for all ages.

Hope is an Arkansas Downtown Network Community under the Arkansas Department of Heritage Main Street Arkansas Program. We are making progress in the areas of downtown business revitalization & historic preservation.

Hope is home to successful industries & businesses as well as a vibrant medical community, which includes Wadley Regional Medical Center. You will be blessed to find hundreds of churches, representing many denominations, in Hope & Hempstead County.

Let us know how we can be of service. The chamber is located at 201 S Main Street in downtown Hope. You may call us at 870-777-3640 or email [hopenelonfest@yahoo.com](mailto:hopenelonfest@yahoo.com).

If you are visiting, enjoy every moment in Hempstead County and make plans to return as soon as possible! If you are moving here, we simply say, "Welcome Home!"

**Nathaniel Holyfield**

**Chamber of Commerce Board President**



Welcome to Hope, a slice of the good life! We started as a small railroad town and grew into one of the largest towns in Southwest Arkansas. With I-30 on our doorstep, you have access to surrounding states and other large cities. When you enter into our town, you will see our southern charm from our downtown area to small shops sprinkled throughout the city.

While here, enjoy our restaurants and hotels that share our southern hospitality. Hope is the hometown of famous people such as President Bill Clinton, Governor Mike Huckabee and Paul Klipsch. Museums in our downtown area include the Clinton Birthplace National Park and the Klipsch Heritage Museum.

We are also blessed to have an abundance of outdoor fun from our lakes and rivers to state and national parks within a short drive. Bring your fishing rod and hunting gear! Also, Hope is known nationwide for its large and sweet watermelons that we celebrate with our Watermelon Festival every August.

From our churches, civic groups and sporting events, we offer something for everyone. If you are already relocating or thinking about it, welcome to a place called Hope.

**City of Hope Mayor, Don Still**



Welcome to Hope! As the Hempstead County Judge, I would like to extend a warm welcome to you and invite you to experience everything that Hope and Hempstead County have to offer. Hempstead County is home to many attractions, including President William Jefferson Clinton's National Birth Place Site and Historic Washington State Park. The county also has two wildlife Management Areas, Bois D'Arc Wildlife Management area, and Millwood Lakes, which feature camping as well as hunting and fishing.

As County Judge, I am very excited to say that the Courthouse will soon be relocating downtown, and I look forward to new growth and new businesses. We are fortunate to have a variety of arts and entertainment, as well as several festivals and events throughout the year.

There is so much more I could say about Hope and Hempstead County and our community, but I know that it won't take you long to figure out just how special Hope really is. Please feel free to contact me at (870) 777-7800, EXT 101 if there is anything that I can help you with. Again, WELCOME to Hope, Arkansas! We are thrilled that you chose to visit us and hope you enjoy every minute of your stay. Hempstead County is a great place to visit...and an even better place to live!

**Hempstead County Judge, Jerry Crane**



**SWARK.TODAY**  
Southwest Arkansas Today

The 2022 Relocation and Tourism Guide is published by SWARK. Today in partnership with the Hope/Hempstead County Chamber of Commerce

**Hope Hempstead**  
**County**  
**Chamber of Commerce**



# RELOCATING TO HEMPSTEAD COUNTY?

## FIND SCHOOLS, UTILITIES & VOTER REGISTRATIONS HERE

### CITY OF HOPE

City Hall  
206 W Avenue A  
Catherine Cook, City Manager  
Don Still, Mayor  
(870) 777-6701  
Public Works Dept. (870) 777-8644  
Sanitation, Streets, Landfill

### HEMPSTEAD COUNTY

(870) 777-7800 Switchboard  
400 S Washington St.  
All courthouse offices Hempstead  
County Judge Hempstead County  
Clerk Hempstead County Assessor  
Hempstead County Treasurer  
Hempstead County Sheriff  
Hempstead County Coroner  
Hempstead County Circuit Clerk

### MAIL

U.S. Post Office in Hope  
121 S. Laurel St. (870) 777-3500

### ELECTRICITY

Hope Water & Light 105 N. Elm St.  
(870) 777-3000

Entergy 1-800-368-3749

Southwest Arkansas Electric Co-Op  
(870) 777-9176

### NATURAL GAS

CenterPoint Energy  
1-800-992-7552

### WATER

Hope Water & Light  
105 N. Elm St. (870) 777-3000

Southwest Arkansas Water System  
(870) 722-6626

### INTERNET & TV

SW Arkansas Telephone  
(870) 653-8222

Hope Prescott Video  
506 S. Walnut (870) 777-4684

AT&T 1-800-464-7928

Premier Broadband  
809 N Hervey St. (870) 777-5369

AIRMAX  
501 N. Hervey (903) 650-8311

### CHAMBER OF COMMERCE

The Hope/Hempstead County  
Chamber of Commerce  
201 S. Main St. (870) 777-3640

### DRIVERS LICENSE

State Revenue Office  
116 E. 12th St. (870) 777-3131

### LIBRARY

Hempstead County Library  
500 S. Elm St. (870) 777-4564

### HUMAN SERVICES

AR Department of Human Services  
116 N Laurel St. (870) 777-8656

### PUBLIC SCHOOLS - HOPE Administration Hope Public Schools

117 East Second St. (870) 777-2251  
**Clinton Primary School**  
601 Lakeshore Dr.; grades (K-4).  
(870) 722-2723

**Beryl Henry Elementary School**  
2000 S. Main; grades (5-6)  
(870) 777-6222

### Yerger Middle School

400 E. 9th St.; grades (7-8).  
(870) 777-5134

### Hope High School

1700 S. Main; grades (9-12).  
(870) 777-3451

**Hope Academy of Public Service**  
601 W 6th St. (870) 722-2705

### PUBLIC SCHOOLS - BLEVINS Blevins Public School District

(K-12)  
5954 Hwy. 29 North in Blevins.  
**District Administration**  
(870) 874-2801  
**High School** (7-12)  
(870) 874-2281  
**Elementary School** (K-6)  
(870) 874-2283

### PUBLIC SCHOOLS - SPRING HILL Spring Hill Public Schools

(K-12)  
633 Hwy. 355 West, in Spring Hill.  
**District Administration**  
(870) 777-8236  
**High School** (7-12) (870) 722-7430  
**Elementary School** (K-6)  
(870) 722-7240

### PRIVATE SCHOOLS

#### Garrett Memorial Christian School

No. 1 Genesis Drive in Hope.  
Administrative Offices  
(870) 777-3256

#### First United Methodist Church

Pre-school (ages 3, 4, and K)  
2300 S. Main. (870) 777-8816

#### Righteous Oaks School of Ministry

7302 Hwy 67 E  
(870) 777-2972



**Hope  
Water & Light**

**105 N Elm St.  
Hope, AR. 71801  
(870) 777-3000**

**SOUTHWEST ARKANSAS  
TITLE COMPANY**



**112 S. MAIN ST. - PO BOX 766  
HOPE, AR 71801  
SWARTITLE.COM - (870) 777-6300**



**FARMERS  
INSURANCE**

**COVERAGE THAT FITS YOUR NEEDS**  
Home • Auto • Life • Business



Call me to get covered today!  
**(870) 722-5373  
Rodney Orr**

**Your local Agent | AR Insurance  
Producer License # 1674237**



# NEW TO HOPE AND HEMPSTEAD COUNTY? HELP IS A PHONE CALL AWAY FOR BASIC SERVICES

## INSURANCE

Anderson-Frazier Insurance  
910 S Main  
(870) 777-3481  
(870) 777-4661

David Parker State Farm  
807 East 3rd (870) 777-2929

Farm Bureau  
1902 East 3rd, (870) 777-9002

Farmers Insurance/Rodney Orr  
1404 South Main  
(870) 722-5373

Farmers Union/Brandy Armstrong  
109 N. Hervey (870) 777-8414

Garrett Insurance Agency  
1500 West 3rd, (870) 777-6115

Heather Doucet State Farm  
500 W. Ave. "D",  
(870) 777-6198

Shelter Insurance/Trey Wright  
1300 South Main, (870) 777-5710

## FUNERAL HOMES

Brazzel/Oakcrest Funeral Home  
1001 South Main, (870) 777-6772

Brandon's Mortuary  
2912 AR-29, (870) 777-1666

Herndon-Fuqua Funeral Home  
403 South Main, (870) 777-4686

Hicks Funeral Home  
407 South Hazel, (870) 777-8674

## BANKS/FINANCE

BancorpSouth  
200 South Elm, (870) 777-2313

Diamond Bank  
400 South Main, (870) 777-3200

Farmers Bank & Trust  
201 East Third, (870) 777-2363

Red River Federal Credit Union  
1513 Walmart Drive  
1-800-822-3317

Bank OZK  
600 South Main (870) 777-9999  
(870) 777-9888

The First National Bank  
of Tom Bean  
301 N. Hervey St. (870) 777-5577

## REAL ESTATE

Lance and Associates  
Hervey and 411 W Ave. C  
(870) 777-1420

Hollis Realty  
1816 S. Main, (870) 722-6225

Sisson Real Estate  
320 N. Hervey, (870) 777-6821

Walker Realty  
622 N Hervey St. (870) 777-4700



From personal checking  
and loans, to large  
commercial projects, our  
team is here to help!

Bankers  
with **HEART**



### Hope Downtown

201 East Third St.  
Hope, AR 71801

### Hope North Branch

617 North Hervey  
Hope, AR 71801

### MyFarmers iTeller in Hope

2103 South Main  
Hope, AR 71801

### Live Teller Hours

Monday - Friday: 7:00 am - 7:00 pm  
Saturday: 8:00 am - 3:00 pm

**(870) 777-2363**

MyFarmers.Bank | MEMBER FDIC





# DINING IN HEMPSTEAD COUNTY

**AMIGO JUAN MEXICAN CAFE**  
1200 N. Hervey St.  
(870) 777-0006

**BIG JAKE'S BBQ**  
603 W. Commerce  
(870) 777-1000

**BRICKHOUSE EXPRESS CAFE**  
UAHT Campus 2500 S. Main  
(870) 722-8142

**BURGER KING**  
1500 N. Hervey St.  
(870) 777-4028

**CHICKEN EXPRESS**  
1701 N Hervey St.  
(870) 292-4549

**CHINESE PANDA**  
509 N. Hervey St.  
(870) 722-2888

**DAIRY FREEZE**  
921 W. Third St.  
(870) 777-4201

**DOMINO'S PIZZA**  
1002 S. Main St.  
(870) 777-3400

**DOS CAMINOS BAKERY**  
112 S. Elm St.  
(870)727-9987

**DOS LOCO GRINGOS**  
2406 N Hervey St. (870) 777-3377

**EL AGAVES**  
510 N. Hervey St.  
(870) 722-4242

**EL RINCONCITO**  
1100 N Hervey St.  
(870) 722-8072

**HE'BREWS 11&1 COFFEE SHOP**  
121 S. Main St.  
(870) 722-8072

**HIRO HIRO SUSHI**  
1110 N. Hervey St.  
(870) 826-3779

**HOPE DONUTS**  
1714 E. 3rd St.  
(870) 777-8000

**KARMA KORNER**  
1701 Rosston Rd.  
(870) 722-5206

**KFC**  
2017 N. Hazel St.  
(870) 777-8677

**MCDONALD'S**  
1601 N. Hervey St.  
(870) 777-1928

**MELON PATCH RESTAURANT**  
104 S. Elm St. (870) 777-8802

**NEIGHBORS**  
1401 E. Third St.  
(870) 777-8659

**PARADISE QUICK STOP**  
901 W. 3rd St. (870) 777-9110

**PEDRO'S HORNET HUT**  
5456 Highway 371  
Blevins, AR (870) 874-1350

**PICKET FENCE**  
200 E 2nd St. (870) 722-5967

**PIZZA HUT**  
905 W. Commerce St.  
(870) 777-8659

**SHEBA'S FAMILY RESTAURANT**  
1013 North Hervey St.  
(870) 777-6266

**SONIC DRIVE-IN**  
128 S. Hervey St.  
(870) 777-4205

**SUBWAY**  
417 N. Hervey (870) 722-5500  
and in Wal-Mart

**SUNY'S**  
5370 Hwy. 67 W. Fulton, AR  
(870) 896-2591

**TAB'S**  
2101 S. Main  
(870) 777-8102

**TACO BELL**  
1501 N. Hervey St.  
(870) 777-2668

**TAILGATER'S BURGER CO.**  
101 S. Main St.  
(870) 777-4444

**TASTY DONUTS**  
912 N Hervey St.  
(870) 722-5767

**TERRY POWELL'S GROCERY**  
310 E. Greenwood St.  
(870) 777-5779

**TREATS OF HOPE**  
118 S. WALNUT  
(870) 703-6113  
(870) 703-6107

**VILMAS MEXICAN**  
227 S Main St.  
(870) 777-8244

**WAFFLE HOUSE**  
1407 N. Hervey  
(870) 722-5033

**WENDY'S**  
1615 N. Hervey St.  
(870) 722-5700

**WILLIAM'S TAVERN**  
105 Carroll St.  
Washington, AR  
(870) 983-2890

**LANCE**  
& Associates  
**REAL ESTATE**



411 W Ave C - Hope, AR 71801

870-777-1420

"People you know. People you trust."

[www.lanceassociates.com](http://www.lanceassociates.com)



# PRIVATE MEDICAL SERVICES

## PHYSICIANS

Dr George Garrett, MD  
302 Bill Clinton Dr. Suite A  
(870) 777-4868

Dr. Dale E. Goins, MD  
302 Bill Clinton Dr. Suite B  
(870) 777-8115

Dr. Phillip Pace, MD  
302 Bill Clinton Dr. Suite B  
(870) 777-8115

Dr. Eve Covas, MD  
205 Smith Road Suite D  
(870) 777-8420

Dr. Sandra A. Sooman,  
MD 900 S Main St.  
(870) 777-6002

W. Ladell Douglas, MD  
100 E 20th Street Ste. B  
(870) 777-2100

Hempstead County Health Unit  
808 W. 5th St.  
(870) 777-2191

Christus Trinity Clinic  
Dr. William Bennett, MD  
Dr. Allyson Hanson, MD  
Devin Shepard, MSN, RN, FNP-C  
805 Trinity Dr.  
(870) 722-1020

Pafford Health Systems  
100 E. 20th, Suite D  
(870) 729-1911

## DENTISTS

Coffee Family Dental  
901 S Elm St. (870) 777-2577

Lester Sitzes III DDS  
1819 S Main St. (870) 777-4466

Robert Carter DDS  
800 S Main St. (870) 777-5769

Smiles of Arkansas  
110 E 18th St. (870) 777-6453

Dr. James K. Tyson DDS  
411 W 16th St. (870) 777-5861

## HOSPITAL

Wadley Regional Medical Center  
at Hope  
2001 S Main St.  
(870) 722-3800  
Open 24 hours

Wadley Regional Medical  
Emergency Room  
Open 24 hours  
Dial 911

## PHARMACIES

Express RX  
717 S. Main St.  
(870) 777-4643

Medi-Mart Pharmacy  
1523 S. Main Street  
(870) 777-5555

Super 1 Pharmacy  
909 N Hervey St.  
(870) 777-6989

Walmart Pharmacy  
2400 N. Hervey St.  
(870) 777-1600

Walgreens Pharmacy  
1004 W. Commerce Blvd.  
(870) 777-4830

## SERVICES

Kindred At Home Community Care  
209 S. Main Street  
(870) 292-4937

Pafford Medical Services  
3509 W. 16th Street  
(870) 777-7660  
EMERGENCY DIAL: 911

Hope Haven Assisted Living  
500 W. 23rd Street  
(870) 777-8655

Heather Manor Nursing &  
Rehabilitation  
400 West 23rd Street  
(870) 777-3448

Oaklawn Estates Health &  
Rehabilitation  
1901 S. Laurel Street  
(870) 777-8855

## OPTOMETRISTS

Texarkana Eye Associates  
2510 N Hervey St.  
(870) 722-2200

Dr. Jarrell D. Irby OD  
108 E 19th St.  
(870) 777-1901



11:00am to 2:00pm  
Monday thru Friday

*Serving homecooked meals*

104 South Elm Street Hope, AR  
870-777-8802

**ROC Recycling**  
Reduce. Reuse. Inspire.

Accepting cardboard, newspaper and  
household items in good condition.

**ROC'n ReRuns**

Resale with purpose... 'to inspire lives'

Monday - Friday 8:00am to 4:00pm

Discovering opportunities that inspire  
lives, by doing **Whatever It Takes**



Serving families of individuals with  
developmental & intellectual disabilities  
**Since 1969**

**Hope Office:**

**500 S Main (870) 777-4051**

Service Locations: Hope, Prescott,  
Lewisville, Caddo Valley

Coverage Areas: Hempstead, Nevada,  
Lafayette, Clark & surrounding areas



## RENTAL PROPERTIES & APARTMENTS

### CANEY CREEK ESTATES

Mobile Home Park  
1705 W 3rd St.  
(870) 777-2035

### PLEASANT RIDGE APARTMENTS

1305 E 3rd St.  
(870) 722-5114

### HOPE SQUARE APARTMENTS

904 S Grady St. # 33  
(870) 777-2693

### IMPERIAL APARTMENTS

1305 S Main St.  
(870) 703-3536

### FULTON SQUARE APARTMENTS

801 Mack St.  
(870) 777-4162

### THE PEAKS AT HOPE

2206 Bill Clinton Dr.  
(870) 722-2964

### CANYON CREEK APARTMENTS

303 W 23rd St.  
(870) 722-2292

### EMERALD VILLAGE

2406 Rocky Mound Rd.  
(870) 292-4140

## LODGING IN HOPE, ARKANSAS

### AMERICA'S BEST VALUE INN/SUITES

2205 N. Hazel, (870) 777-4676

### BEST WESTERN OF HOPE

1800 Holiday Dr., (870) 777-9222

### MOTEL 6

1600 N. Hervey, (870) 722-1904

### RELAX INN & SUITES

1504 N. Hazel, (870) 777-0777

### HAMPTON INN AND SUITES

2700 N. Hervey, (870) 777-4567

### HOLIDAY INN EXPRESS

2600 N. Hervey, (870) 722-6262

### HOPE VILLAGE INN & RV PARK

2611 N. Hazel, (870) 777-4665

### SUPER 8 BY WYNDHAM

2000 Holiday Dr., (870) 777-8601

## MEETING & EVENT VENUES

### THE VENUE AT TWELVE OAKS

4177 Hwy 29 N, Hope AR  
(870) 703 4643

### ICE CASTLE

617 E. 2nd St. Hope, AR

### COULTER FARMSTEAD

209 Crey St. Washington, AR  
(501) 650-2296

### TIMELESS TRADITIONS

474 Hempstead 7, Hope, AR  
(870) 397-3370

### HEMPSTEAD HALL

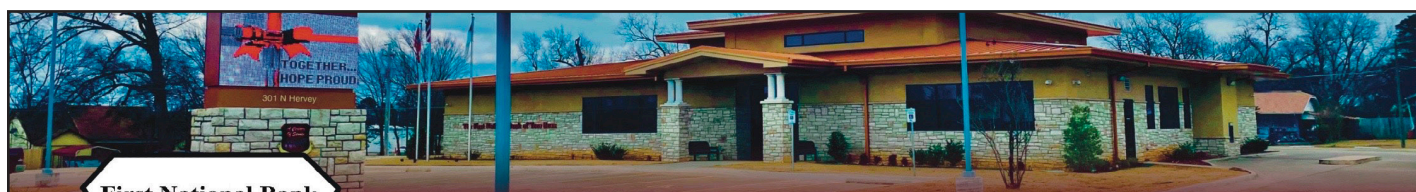
2500 S. Main St. Hope, AR  
(870) 722-8565


### THE FIRST NATIONAL BANK OF TOM BEAN

301 N. Hervey St. Hope, AR  
(870) 777-5577

### HAMPTON INN

2700 N. Hervey St. Hope, AR  
(870) 777-4567





First National Bank  
Hope Branch

# The First National Bank of Tom Bean

## A Century of Service

Member  
**FDIC**  
EQUAL HOUSING  
LENDER

## 301 N. Hervey St. Hope, AR

## Phone: (870) 777-5577 | Fax: (870) 777-5578

## Hometown Banking... with people you know.



# HEMPSTEAD COUNTY SEASONAL EVENTS

**JONQUIL FESTIVAL** - In Old Washington Historic State Park, Washington, AR. Nine miles north of Hope on U.S. Hwy. 278. Named for native wildflower in Southwest Arkansas. Information at (870) 983-2698.

**TRAIN DAY** - In Downtown Hope at the Amtrak Depot. Celebrates the Cairo-Fulton Depot and the Stopping of the Amtrak Passenger Train. Information at (870) 777-4444.

**WATERMELON FESTIVAL** - In Hope Fair Park, Hope, AR. Authoritative Watermelon Festival with three Guinness Book of World Records watermelons grown by Ivan and Lloyd Bright of Hope. Information at (870) 777-3640.

**CIVIL WAR WEEKEND** - Historic Washington State Park, Washington, Ark., nine miles north of Hope on U.S. Hwy. 278. Civil War era Hempstead County. Demonstrations of period life, blacksmithing, candle making scripted Civil War battle on Sunday. Information at (870) 983-2625.

**FRONTIER DAYS** - Historic Washington State Park, Washington, Ark. 9 miles north of Hope on U.S. Hwy. 278. Information at (870) 983-2698. SW Arkansas Livestock Show. Hope Fair Park, Hope. Among largest district fairs in Arkansas, with midway, arts/crafts, livestock exhibit, professional bull riding. Information at (870) 777-7500.

**CHRISTMAS IN CANDLELIGHT** - Historic Washington State Park, Washington, Arkansas. Nine miles north of Hope on U.S. Hwy. 278. Authentic 19th Century Arkansas holiday sights, sounds in the first county seat of Hempstead County. Information at (870) 983-2684.

## HISTORIC DOWNTOWN HOPE

Historic Downtown Hope is making progress in areas of downtown business revitalization and historic preservation. Our historic district is now in its fourth year as an Arkansas Downtown Network Community under the Main Street Arkansas Program.

Locals and tourists alike enjoy strolling, shopping, and dining in downtown Hope. Retail development plays a vital role in our revitalization efforts with a little something for everyone. Plan a day trip to Hope and enjoy delicious food from one of our downtown eateries.

Downtown Hope also offers events, activities, and programs such as the Train Day Festival in May and a wide variety of educational and cultural opportunities offered by the Southwest Arkansas Arts Council.

The HUB in Pavilion Park is located in downtown Hope. The HUB, an outdoor venue, is the location of our Hope Farmers' Market as well as a host of outdoor activities. Also located



in downtown Hope is the Visitors' Information Center and AMTRAK.

Within walking distance from the heart of downtown, you will discover President William Jefferson Clinton's Birthplace Home National Historic Site and the Klipsch Visitors' Center, which provides information pertaining to Paul W. Klipsch, an American audio pioneer.

## ANTIQUUE SHOPS & FLEA MARKETS

### ELM STREET MARKET PLACE

121 S. Elm St.  
(870) 777-9993

### BOB'S ANTIQUES

113 S. Elm St.  
(870) 703-2916

### THE STUDIO

113 S. Elm St.  
(870) 703-0039

### SECOND CHANCE FLEA MARKET

2407 S. Main St.  
(870) 292-4515

### T&C RESALE SHOP

301 S. Hazel St.  
(870) 331-4670

### FLYING PIG FLEA & TRADE DAYS

403 S. Phillips Dr.



**Emergency: Dial 911**

**Hope Police Dept.**  
**(870) 777-3434**

**Hope Fire Dept.**  
**(870) 777-6702**

**Pafford EMS: Dial 911**

**Hope City Hall:**  
**(870) 777-6701**

**Hope Public Works:**  
**(870) 777-8644**

**Parks & Recreation:**  
**(870) 777-7500**

**Building Services:**  
**(870) 722-2505**

The City of Hope, Arkansas is largest city in Hempstead County and serves as its county seat of government. Hope was incorporated in 1873, and it was famously named for Hope Loughborough, a daughter of a railroad executive, when rail service was first established in the area.

According to the most recent United States Census in 2022, Hope's population was 9,425, the 42nd largest City in the State of Arkansas. Located in southwestern Arkansas directly off Interstate 30, Hope is approximately 36 miles northeast of the Texarkana metropolitan area, and it is 112 miles southwest of Little Rock, the Arkansas state capital. Hope is also driving distance from such cities as Dallas, Texas (approximately 209 miles), Shreveport, Louisiana (103 miles), El Dorado, Arkansas (79 miles) and Monroe, Louisiana (143 miles),

The City of Hope operates under a City Manager/Board of Directors form of government. The citizens of Hope elect, within seven geographic city wards, a director representing each ward over the course of four-year staggered terms, and the Board of Directors as a group appoint the City Manager, City Attorney,

and City Clerk.

The Hope City of Board of Directors serve as the City of Hope's legislative branch of City government. The Board selects one of the directors to serve as Mayor. The Mayor presides over Board meetings and serves as the ceremonial head of the City government as well as executing contracts and other legal documents as authorized by the Board or required by law. Don Still is presently serving as Mayor of Hope.

The City Manager acts as the City of Hope's chief administrative officer, overseeing the day to day operations of municipal government and eight city departments. Catherine Cook is the current City Manager of Hope, originally appointed in April 1996. J.R. Wilson, who is Hope's Chief of Police, also serves as the Assistant City Manager.

The City of Hope operates eight city departments with approximately 126 employees in service of its residents, including Administration, Building Services/Code Enforcement, Human Resources, Fire Department, GIS/Technology, Parks and Recreation, Police Department and Public Works.

Hope City Hall, the administrative center

of Hope's city government is located at 206 W Avenue A in downtown Hope.

Both the Hope Fire Department and Hope Police Department are professional and state-accredited units. Hope enjoys an ISO Class 3 fire rating. The Hope Fire Department includes 16 professional firefighters and has two fire stations.

The City of Hope also has several commissions and citizen boards, including Planning & Zoning, Tourism, Housing Authority, and Hope Water & Light Commission.

Hope Water & Light is the city-owned and operated utility company, but it operates independently under the oversight of the Hope Water & Light Commission with its own General Manager and a separate 40-employee professional staff.

Hope, Arkansas is famously known as the hometown of William Jefferson "Bill" Clinton, the 42nd President of the United States, who also served as Governor of Arkansas from 1979 to 1981 and again from 1983 to 1992.

Hope, Arkansas is also the hometown of former Arkansas Governor Mike Huckabee, who served 44th governor of Arkansas from 1996 to 2007. Huckabee is now known as a Fox News personality as well as best selling author. Mike Huckabee also ran for President twice, losing in the GOP primaries. Huckabee's daughter, Sarah Huckabee Sanders, was born and raised in Hope, and served as White House Press Secretary during the Trump Administration.

Other nationally prominent citizens from Hope include Clinton's former White House Chief of Staff Mack McLarty; attorney Vincent Walker Foster, Jr.; PGA golfer Ken Duke, actress/vocalist Ketty Lester, and actress Melinda Dillon.



**BancorpSouth®**  
Member FDIC  
*Right Where You Are*

**200 S Elm St.**  
**Hope, AR** Member FDIC  
**(870) 777-2313**



**104 S. Hervey St.**  
**Hope, AR 71801**  
**870-703-7755**  
**Brandy T. Armstrong, Owner**





Hempstead County Public Services are headquartered in the Hempstead County Courthouse located at 200 East 3rd Street in Hope. Public offices in the county courthouse are generally open from 8 a.m. until 4 p.m. Monday through Friday. County offices generally observe all major state holidays and offices are closed on those days.

The Hempstead County Judge's Office processes all county bills, maintains county roads, the courthouse and all county buildings and property. Jerry Crane is the current County Judge and acts as the chief administrative officer of the county.

The Hempstead County Clerk is Karen M. Smith. The county clerk's office issues marriage licenses, processes the county's payroll, pays the county's bills, registers voters and conducts early and absentee voting, and distributes county and tax revenue. The office also processes adoptions, probate cases and mental commitments.

The Hempstead County Circuit Clerk is

Gail Wolfenbarger. This office is in charge of all felony court filings, processing of child support, recording of deed records and uniform commercial code filings. The office also archives all civil, criminal and juvenile court judgments.

The Hempstead County Sheriff's Office, not only enforces the law and conducts general police duties, but also serves as the county's tax collector. James Singleton is the Hempstead County Sheriff. This office is housed in and is in charge of the Hempstead County Detention Center at 312 S. Washington St., and is the county's civil process server.

The Hempstead County Tax Collector's Office is operated under the authority of the Hempstead County Sheriff's department, and is responsible for collection of personal and real property tax receipts.

The Hempstead County Treasurer's Office handles all county receipts and disbursements. The office also keeps track of the county's investments. Judy Flowers is the current County Treasurer.

**Hempstead County  
Courthouse Automated  
switchboard:  
All county offices at  
(870) 777-8400**

The Hempstead County Assessor's Office assesses the value of all personal property in the county, all licensed property and business inventory for tax purposes. The office appraises and assesses all county real estate. The office also keeps a file of all county real estate which includes the assessed value and legal description of each property. The current County Assessor is Kim Smith.

Offices also located at the county courthouse, include: The Hempstead County District Court responsible for all misdemeanor court filings including traffic citations, as well as felony first appearance and bond settings. The current district judge is Tony Yocom.

The Hempstead County Cooperative Extension Service is a branch of the University of Arkansas Cooperative Extension Service and is responsible for extension to the public of expertise in agriculture, home and family management and 4-H Club activity. Terrie James is Extension Staff Chair, and Kim Rowe is the County Extension Agent.

The Hempstead County Juvenile Intake Office is responsible for the filing and monitoring of juvenile court matters. The current juvenile intake officer is Carolyn Hawthorne.



**Unity**  
BAPTIST CHURCH  
welcomes you to Hope!

**402 S Hervey St. - (870) 777-4078**  
**We Have A Place For You!**

**Excellence  
Every Day!**



**Hope Public Schools**





## HEMPSTEAD COUNTY COMMUNITIES

### OUTSIDE HOPE, SMALL TOWNS OFFER COUNTRY LIVING & RICH HISTORY

**BLEVINS, population of 297**, serves a large rural community. The town is named after Hugh Blevins, an early settler in the 1800s. The city is located at the junction of U.S. Highway 372 and Highway 29 in Hempstead County, 14 miles north of Hope. The town mayor is currently Bobby Steed.

**FULTON, population 191**, is located off U.S. Highway 67 on State Highway 355. The town was called Point Rocky at one time, and also named Fulton on Red River. The name was changed in 1840 to simply Fulton. It was named after William Fulton, the last governor of the Arkansas Territory. The current city government includes a town mayor, Henry Hale, and city councilmen.

**MCNAB, population 30**, is located on U.S. Highway 355. James T. Conway serves as mayor. McNab is considered the official city connected with the John W. Turk Jr., Power Plant, which was completed in 2010. The city was established 1809 and was named after Charles McNab who was a landowner in

Miller County.

**MCCASKILL, population 57**, is located on U.S. Highway 371, approximately six miles west of the town of Blevins. The mayor of McCaskill is Marion Hoosier. McCaskill was named for a family of early settlers from North Carolina. They moved into the area just before the Civil War. A brother of the McCaskill family served in the Union Army.

**OAKHAVEN, population 65**, is located northwest of Hope on State Highway 32, and was established in World War II as the officer housing community for the Southwestern Proving Grounds. Troy Lerew is the mayor.

**OZAN, population 81**, is located on U.S. Highway 278 W., about 15 miles north of Hope. Ozan comes from a French word Aux Ane, meaning "at the Ane." It was corrupted by English speakers into Ozan. Ozan was at one time a large center for cotton production. Zechariah Melson serves as the town mayor.

**PATMOS, population 58**, is located on State Highway 355, east of State Highway

29 South. Patmos is a Biblical name. The city was also considered to be named Luzon or Dura.

**PERRYTOWN, population 232**, is located about three miles east of Hope on U.S. Highway 67. The city mayor is Dave Rose. It was named after Perry Campbell, a well-known community activist and businessman for over 50 years. It is home to the Southwest Regional Office of the Arkansas Game and Fish Commission.

**SPRING HILL**, is accessible on State Highway 355 West on State Highway 29 and State Highway 174 S. It was originally known as the Spring Hill Township. It is located 12 miles east of the Red River and was named for a large water spring. Spring Hill is unincorporated.

**WASHINGTON, population 180**, is located nine miles north of Hope on U.S. Highway 278 W. It is a richly historical town, and is commonly known as Historic Washington because it is home to Historic Washington State Park. Paul Henley is the mayor of Washington and serves with four council members.

## CANEY CREEK ESTATES

### MOBILE HOME PARK

1705 W 3rd St. & PO Box 35 - Hope, AR 71801

Family friendly  
community &  
affordable living!

CALL  
TODAY!  
(870) 777-2035



*Brazzel Oakcrest*

THE FUNERAL HOME

(870) 722-6772

Eddie Brazzel, Director  
1001 S. Main St. Hope, AR





On Aug. 19, 1946, Virginia Cassidy Blythe gave birth to her son, William Jefferson Blythe III, named for his father who was killed in an automobile accident three months before he was born. Young Billy Blythe grew up to become William Jefferson Clinton — the 42nd president of the United States. He and his mother lived with her parents in their home at 117 Hervey St. in Hope, where the future president spent the first four years of his life. Growing up in Hope, Clinton embraced the values of this small town. It was here that he learned early lessons in the importance of family, education, and racial equality — lessons that served him well in his public life and led him on a path to the nation's highest office.

The home was restored and furnished with period pieces by the Clinton Birthplace Foundation, Inc. It opened to the public in 1997. President William Jefferson Clinton Birthplace Home National Historic Site (NHS) was established as a unit of the National Park Service in December 2010. The historic site includes the birthplace home, a visitor center (located in an adjacent historic home) and the Virginia Clinton Kelley Memorial Garden.



The interior of this modest home invites visitors to experience the house as Clinton did as a small child, from the stairs he hurried down on Christmas morning to the playing cards tacked to the kitchen window. President William Jefferson Clinton Birthplace Home NHS offers a glimpse into the ordinary home that helped shape his formative years.

Former President Clinton attended

the formal dedication ceremony for the historic site on April 16, 2011, along with Secretary of the Interior Ken Salazar and National Park Service Director Jon Jarvis. They were joined by more than 500 of Clinton's friends, family members, neighbors and supporters to commemorate the site's entrance into the National Park Service.

Begin Your Tour at the Visitor Center, located in an adjacent historic home, which includes interpretive exhibits about President Clinton's early life in Arkansas and a bookstore. Tours of the birthplace home are offered every half hour, with the last tour leaving at 4 p.m. Admission is free.

**Tyson**

Tyson Foods is an Equal Opportunity/Affirmative Action Employer. All qualified applicants will be considered without regard to race, national origin, color, religion, age, genetics, sex, sexual orientation, gender identity, disability or veteran status.

**[tysonfoods.com/careers](https://tysonfoods.com/careers)**

**OPERATING HOURS**  
The visitor center is open daily from 9 a.m.-4:30 p.m., except for Thanksgiving Day, Dec. 25 and Jan. 1.

**MORE INFORMATION**  
President William Jefferson Clinton Birthplace Home National Historic Site  
117 Hervey Street  
Hope, AR 71801 • 870-777-4455  
[www.nps.gov/wicl](http://www.nps.gov/wicl)

President William Jefferson Clinton Birthplace Home NHS is one of more than 390 parks in the National Park System. School groups and other organized tours are welcome. Please call the visitor center for reservations.

# HEMPSTEAD COUNTY CHURCH LISTINGS

## ASSEMBLY OF GOD

First Assembly of God  
322 N. Main St., Hope AR  
870-777-4357

Word of Grace  
Pastor Carroll Bryant Jr.  
2909 Hwy 278 E., Hope, AR  
870-777-9668

## BAPTIST

Anderson Baptist Springhill, AR  
Pastor Wayne Warlick  
214 Hempstead 7, Hope, AR  
870-777-5993

Antioch Missionary Baptist  
Pastor Elmer Grant  
799 Hwy 332, Hope AR

Bethany Baptist Springhill, AR  
Eric Fisher  
589 Hwy. 355 W., Hope, AR  
870-777-2044

Bodcaw #1 Baptist Church  
Pastor Lane Garner  
351 Nevada County 13, Emmet, AR  
870-722-1972

Calvary Baptist Church  
Gary Johnson  
1301 West Ave. B, Hope, AR  
870-777-4650

Charity Missionary Baptist Church  
Rev. Jessie Henry  
5210 Hwy. 67 West, Fulton, AR  
870-896-2670

Columbus Baptist Church  
Pastor William Nutt  
Hwy 73 West, Columbus  
870-777-5368

Eastside Baptist Church  
Pastor Billy Porter  
1101 N. Bonner St., Hope AR  
870-777-8484

Emmanuel Baptist Church  
Pastor Otis McKamie  
216 Andres St., Hope AR

First Baptist Church  
Pastor Daniel Bramlett  
315 South Main St., Hope AR  
870-777-5757

Washington Baptist Church  
Pastor Robert E. Nichols  
105 SE Jay St. Washington, AR

Fulton Union Baptist Church  
201 Hempstead St., Fulton, AR  
870-896-2597

Greater Camp Springs Baptist Church  
Pastor Kendric Burns  
913 Yellow Creek Rd.  
870-983-2949

Garrett Chapel Missionary Baptist Church  
Pastor Anthony Mullens  
104 S. Ferguson St. Hope, AR  
870-777-4001

Garrett Memorial Baptist Church  
Pastor Cliff Johnson  
#1 Genesis Drive, Hope, AR  
870-777-3256

Grace Baptist Church  
Pastor Curtis Bobo  
4100 East Third Street, Hope, AR  
870-777-2792

Greater Hope Missionary Baptist Church  
Pastor Bennie Kingsby  
1201 West 3rd Street, Hope, AR  
870-777-6957

Greater St. Luke Baptist Church  
Pastor Cecil Flenory  
3945 Hwy. 67 West, Hope, AR  
870-777-9314

Guernsey Baptist Church  
Pastor Jake Vandenburg  
4284 Hempstead 2 Hope, AR  
870-777-8405

Harvest Baptist Church  
430 Hwy 73 West Hope, AR

Haynes Chapel Baptist Church  
Pastor Frankie B. Mitchell  
300 Hwy 32 East, Hope, AR  
870-777-8487

Landmark Missionary Baptist Church  
Glen Ridings  
412 Bill Clinton Drive, Hope, AR  
870-331-4292

Lonoke Missionary Baptist Church  
Rev. Alvin L. Hunter  
702 South Hazel, Hope, AR  
870-777-6467

Macedonia Missionary Baptist Church  
Rev. Harold Massey  
2333 Hwy 73 West, Columbus, AR  
870-983-2718

Malbrook Baptist Church  
Pastor David Blasé  
1456 Hwy 195 North, Blevins, AR  
870-874-2568

Mt. Cannon Baptist Church  
Pastor E.D. Lonnie  
804 Shearman St., Hope, AR

Mt. Hebron Baptist Church  
Pastor Jeremiah Hardamon  
295 County Road 1040, Hope, AR

Mt. Nebo Baptist Church  
Pastor Bruce Porter  
1197 Hempstead 57, Hope, AR

Mt. Olive Baptist Church  
Pastor Calvin Turner  
149 Hempstead County 246  
Hope, AR

New Bethel Baptist Church  
482 Hempstead County 132  
Hope, Arkansas

New Hope Missionary Baptist Church  
Pastor Neal Ridling  
3725 Hwy 278 West, Hope, AR

Pleasant Springs Baptist Church  
4604 Hwy 371  
McCaskill, Arkansas

Providence BMA Church  
Pastor Casey Curtis  
5770 Hwy 29 S., Hope, AR  
870-777-6299

Providence Memorial Baptist Church  
7102 Hwy 67 East, Perrytown  
870-777-5155

Providence Full Gospel Missionary Baptist Church  
Pastor J.L. Jones  
3576 Hwy 278N, Hope, AR

Rising Star Baptist Church  
Pastor James E. Lister  
1002 East Beech, Hope AR  
870-777-5246

Riverside Baptist  
Pastor Larry Byers  
384 Hillcrest Rd Fulton, AR

Shover Springs Baptist Church  
Pastor Eric Barbaree  
110 Hempstead County 54, Hope AR  
870-777-2919

Southside Baptist Church  
Pastor Ernie Sorrells  
2805 South Main St., Hope AR  
870-777-6272

Saint John Baptist Church  
Pastor Dienco Muldrew  
1000 North Greening, Hope, AR  
870-777-6714

St. John Baptist  
Pastor Robert G. Nance Jr.  
Hwy 195, Deann, AR

St. Luke #2 Missionary Baptist  
Pastor James Conway  
5296 Hempstead County 2  
870-777-8835

Tabernacle Baptist Church  
Pastor Larry Brown  
1707 Hwy 174 S

Union Grove Missionary Baptist Church  
Pastor Donald Thompson  
546 Hwy 195, Blevins, AR  
870-874-2626

Unity Baptist Church  
Pastor Nick Flowers  
402 Hervey Street, Hope, AR  
870-777-4078

Victory Baptist  
Pastor Toby Bane  
2510 Springhill Rd.  
870-397-3344

White Oak Grove Missionary Baptist  
Pastor John Nations  
300 Hwy 332E  
Deann, AR

## CATHOLIC

Omega Gospel Ministries  
2211 East 3rd Street, Hope, AR

Our Lady of Good Hope  
Pastor C. Kambala  
301 South Walker Street, Hope, AR  
870-777-3202

## CHRISTIAN

First Christian Disciples of Christ  
Pastor Les Patterson  
102 West Ave B Hope, AR  
870-777-2594

United Christian Church of Emmet  
Pastor Wanda Bullock  
407 West 4th Street, Emmet, AR

Spring Hill Christian Church  
Pastor Revel Kidd  
605 Hwy 299, Springhill, AR

Oak Grove Church  
Pastor Revel Kidd  
450 Hempstead County 54  
Hope, AR

- Continues on page 15



# HEMPSTEAD COUNTY CHURCH LISTINGS

## CHURCH OF CHRIST

Central Church of Christ  
Minister Harold Freeman  
5707 Hwy 29 South, Hope, AR  
870-777-3599

Eastside Church of Christ  
410 North Cedar St. Hope, AR

Hope Church of Christ  
Minister Barry Haynes  
1815 East Third Street, Hope, AR

## EPISCOPAL

St. Mark's Episcopal Church  
301 South Elm Street, Hope, AR  
870-777-3297

## JEHOVAH'S WITNESS

Kingdom Hall of Jehovah's Witness  
1709 North Hazel St., Hope, AR  
870-777-5798

## METHODIST

Avery Chapel United Methodist  
661 Hempstead County 29 McCaskill, AR

Beebe Memorial C.M.E  
Pastor Monette Shaw  
412 North Hazel St., Hope AR  
870-777-2112

Bethel AME  
Pastor Thurston B Lamb  
418 South Laurel St., Hope, AR  
870-777-9376

Bingen United Methodist  
Pastor Jim Polk  
434 Hempstead 27, Bingen, AR

Bruce Memorial United Methodist  
Pastor Joe Miller  
5210 Hwy 371 N., Blevins, AR

Deann United Methodist  
Pastor Gary Riley  
117 Hwy 195 North, Deann, AR

First United Methodist  
2300 South Main St., Hope, AR  
Pastor Steve Johnson  
870-777-8816

Friendship United Methodist  
Pastor Gene Ross  
4688 Hwy 195 N., McCaskill, AR

Hinton United Methodist  
Gary Riley  
1518 Hwy 355E, Patmos, AR

Mt. Pleasant C.M.E  
Pastor Martha Benton  
518 East 28th Street, Hope, AR  
870-777-2690

Mt. Zion C.M.E.  
Pastor Don White  
819 East Hickory St., Hope, AR  
870-777-1722

Shorter Chapel A.M.E.  
Pastor John L. Bates  
5809 Hwy 29 N. Blevins, AR

St. John United Methodist  
Pastor Danny Dunlap  
814 North Hervey St., Hope AR  
870-777-2570

St. Luke C.M.E.  
Pastor Earl Jones  
6518 Hwy 278 North, Ozan, AR  
870-777-3111

Washington Methodist  
Pastor Keenan Williams  
124 Hwy 195 South, Washington, AR  
870-777-3111

## MORMON

The Church of Jesus Christ Of Latter-Day  
Saints  
Pastor Stephen French  
3069 Hwy. 29 N., Hope, AR  
870-777-8453

## NAZARENE

Apostolic Holiness  
Pastor Steven Higgason  
317 West 23rd St., Hope, AR  
870-826-6455

Bell Chapel Church of the Nazarene  
Pastor Jack McAllister  
5803 Hwy 371 N. Blevins, AR  
870-874-2272

Church of the Nazarene  
Pastor Vilma Ricardo Espinoza  
212 S. Walnut, Hope, AR  
870-722-2889

First Church of the Nazarene  
Pastor Gerald Matthew  
909 Rosston Rd., Hope, AR  
870-777-2255

## PENTECOSTAL

Church of God in Christ  
Washington Temple  
Pastor B. Washington  
808 S. Edgewood St., Hope, AR  
870-777-4192

Faith Temple COGIC  
Pastor Kenneth Tidwell  
814 West Ave. B, Hope, AR  
870-722-6074

First Church of God  
Pastor Jacob Brown  
713 N. Laurel Street, Hope, AR  
870-777-3679

First Pentecostal Church of God  
Pastor Robert Barns  
601 West 5th St., Hope, AR  
870-777-9006

Hendrix Memorial Church of  
God in Christ  
Pastor Maurice Williams  
409 S. Main St., Blevins, AR  
870-767-4595

House of Praise Pentecostal  
Church of God  
Pastor G. Grinder  
601 West 5th St., Hope, AR  
870-777-9006

New Life Church  
Pastor Craig Adams  
4205 E. 3rd, Hope, AR  
870-777-1114

Pentecostal Temple Church  
Of God in Christ  
Pastor Fred I. Coleman  
901 Bell St. Hope, AR

## PRESBYTERIAN

First Presbyterian  
Pastor Kathleen Hignight  
701 S. Main St.  
870-777-3233

Roadside Church of God in Christ  
Pastor Theodore Marks  
Hwy 278 Ozan, AR  
870-983-2606

## NONDENOMINATIONAL

A Place of Meeting  
Pastor Nathaniel Crane  
7302 Hwy 67 East, Perrytown, AR  
870-777-2972

Hope Community  
2110 Rocky Mound Rd., Hope, AR  
870-777-1508

Living Water Fellowship  
2985 Hwy 29 N. Hope, AR

New Hope Apostolic  
Pastor Elliott Bosh  
713 S. Grady St., Hope, AR  
870-777-5796

New Testament House of Prayer  
Pastor Otha Hill  
257 Hempstead 177, Hope, AR  
870-777-4022

Old Liberty Community Church  
Pastor Charles Hawley  
120 Hempstead County 10

Renewed Faith Christian Center  
Pastor Brain Faulk  
600 Oak St., Hope, AR  
870-777-6771

Straight & Arrow Path  
Pastor Billy Williams  
513 S. Elm St., Hope, AR  
870-722-9991

Quakers  
870-777-5382

The Supreme Council of The House of Jacob  
Pastor Simeon Ams  
617 E. Ave H, Hope, AR

Unlimited Outreach Ministry  
Pastor Gary Jones  
3177 Hwy 32 N. Hope, AR

Word of Faith  
Pastor Lee Little  
5898 Hwy 29 N. Hope, AR  
870-874-3327

Rafter J Cowboy Church  
Pastor Terry Evans  
4913 Hwy 29 S. Hope, AR  
870-703-4203

Southside Assembly  
Pastor Jeff Smith  
1121 Spring Hill Rd.

Church of God of Prophecy  
Hope Family Church C.O.G.O.P.  
Pastors Jeff & Pam Smith

Iglesia de Cristo  
1900 East Hempstead St.  
870-729-9411



# HOPE WATERMELON FESTIVAL

REGIONS PREMIERE EVENT ATTRACTS THOUSANDS ANNUALLY

Summer in Arkansas offers one of the premier festivals in the state, the Hope Watermelon Festival.

Giant watermelons are the theme that remains unmatched in Arkansas since 1926 to the extent that the Hope Watermelon Festival Politically Correct Watermelon Eating Contest draws more political names than any other festival in Arkansas; the festival has produced more world records; and, it has consistently been a favorite venue for some of the best names in musical entertainment.

The traditional roots of the festival in bringing top popular music names to Southwest Arkansas stretches from the late country legend Patsy Montana to featured talents such as Charlie Daniels, Tanya Tucker, Lori Morgan, and Toby Keith. More recent years have seen legendary acts like the Oak Ridge Boys, Mickey Gilley and Johnny Lee as well as an appearance by the reigning 2016 Miss America Betty Cantrell.

And one area "Watermelon Idol" contest winner, Rachel Hale, went on to national fame when she auditioned for Season 12 of American Idol and became a featured contestant and top 20 female competing on the show in 2013.

Three generations of the Bright family of Hope have contributed to bringing Guinness Book of World Records honors for watermelon growing to Hope and the festival. The late Ivan Bright raised the first world record melon for the festival in 1979. Bright's grandson, Jason, returned the record to Hope in 1985, and Jason's dad, Lloyd, grew a third world record melon in 2005. The 268.8-pound Carolina Cross watermelon grown in 2005 by Lloyd Bright was almost nine pounds heavier than his son's 1985 record holder, and more than 60 pounds heavier than the original record holder grown by the elder Bright.

Indeed, the Bright family has become one of the premiere providers of melon stock for the annual big melon auction, with a 135-pound

specimen selling for \$500 to Super 1 Foods in Hope in 2014.

The Hope Watermelon Festival has been a showcase for the giant melons each August since O. D. Middle-brooks set a local record of 195 pounds for a watermelon in a competition which had its beginnings as a community enterprise developed from an idea to provide a snack for railway passengers during stopovers in Hope in the 1920s.

Conceived by druggist John S. Gibson as a contest to promote Hope's economy during the 20s, and organized by the Hope Chamber of Commerce in 1926, the festival remains under the auspices of the Hope/ Hempstead County Chamber of Commerce, and annually brings as many as 50,000 visitors to Hope Fair Park on the second weekend in August.

The festival, held annually at Hope's Fair Park, includes a beauty pageant, and a "big melon contest," which remains at the forefront of events including world championship watermelon eating and seed spitting contests which have drawn entrants from around the world. Other events include arts and crafts; softball and bass fishing tournaments; a 5K run/walk; gospel music concerts; food concessions of every conceivable variety; and, literally, tons of fresh watermelon.

The festival has been a favorite stop of Hope native and former President Bill Clinton, a Democrat, as well as former Governor Mike Huckabee, also a Hope native, and a Republican. The event also regularly attracts a host of Arkansas state elected officials, Congressmen, Senator and political figures every year.

The festival has been the subject of documentaries from Great Britain to Japan, and in the past, has been the site of live television broadcasts for the Today Show, CBS This Morning, Regis and Kathie Lee, and Good Morning America.



870-777-7617



870-777-4567



870-777-6262

**ALL THREE HOPE LOCATIONS NORTH  
OF I-30, OFF OF N. HERVEY ST.**

**WELCOME TO HOPE!**





# AMTRAK DEPOT & VISITORS CENTER

DAILY AMTRAK STOPS, EXHIBITION OF HOPE HISTORY

After a 36-year absence, passenger rail service returned to Hope in 2013 with the inauguration of two daily Amtrak stops.

Amtrak runs two passenger trains daily, with Train 21 departing at 5:09 a.m., traveling west, and Train 22 departing at 9:18 p.m., going east, according to the official schedule. That makes the Hope connection part of the national schedule, allowing passengers embarking from Hope to travel to major Amtrak destinations nationwide.

Boarding in Hope is at the Amtrak depot in the Hope Visitor and Information Center at the intersection of Division and Main streets, and taxi service is available in town. At present, Amtrak tickets must be purchased at [amtrak.com](http://amtrak.com) online.

Since 1912, the Union-Pacific Railroad has been a major part of Hope, and helped bring Hope to life as it has so

many other small towns in America. The railroad has shared its part of history, helping to bring presidential and vice-presidential candidates to Hope to stop and campaign, as well as famous musicians such as Duke Ellington, Count Basie, and the King himself, Elvis Presley.

As the interstate highway system developed and improved in efficiency as well as the automobile becoming more affordable, safe, and available, the railroad in Hope gradually saw a decrease in the use of passenger trains. In 1971, the last official passenger train passed through Hope. The railroad continued to be used by freight trains and the depot was used as an office building until 1994 when it was closed.

In 1996, the City of Hope acquired the depot from the railroad company, and decided to use it as a starting point for

the increasing number of tourists who were showing interest in Hope.

The Visitor Information Center, itself, showcases a significant exhibition of Hope history, including the early childhood of Hope native, former President Bill Clinton. In 2008, the VIC also acquired exhibit materials from the formative years of another former governor of Arkansas, Mike Huckabee.

The VIC also showcases special exhibits of the Department of Arkansas Heritage from time to time, and has an extensive collection of railroad memorabilia and history associated with the development of Hope.

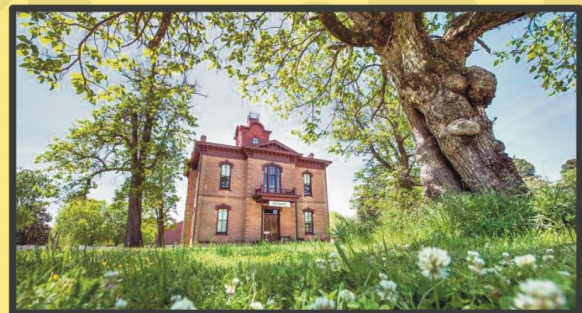
The VIC is operated by the City of Hope Tourism Commission, with hours from 8:30 a.m. to 5 p.m., Monday through Friday, 9 a.m. to 5 p.m. Saturday, and 1 to 4 p.m. on Sundays.

## *Plan a Day Trip to Hempstead County*



### *President Bill Clinton Boyhood Home*

This is where it all started for the 42nd President of the United States. Come and tour President Clinton's boyhood home located in Hope, AR.



### *Historic Washington State Park*

Take a walk back in time. Experience life on the frontier. Tour the historic village where the Bowie knife was born and grab lunch at William's Tavern Restaurant.

**Paid in part by state and regional tourism association funds**



The original Klipsch & Associates museum was in operation before 1978 and was established by Paul W. Klipsch (PWK), and included items he made, bought at auction or was given. In 1979, Jim Hunter became the company Historian and remained until his retirement at the end of 2016. During the last year of Hunter's tenure, it became clear to Klipsch Group, Inc. (the successor to Klipsch & Associates) that no one else in the company would have the time nor the inclination to carry it forward, so the concept of a non-profit organization came up. In short time there was a volunteer working group that transformed into an Executive Committee, followed by a Board of Trustees and the KHMA was incorporated in the State of Arkansas on June 7, 2016 as a 501c3 charity. Creation of ByLaws, policies, and

procedures were completed in 2016 and the Museum opened to the public on July 12, 2017.

The main Klipsch Heritage Museum Assoc., Inc. mission, is to restore, preserve, maintain and display Klipsch and Klipsch-related artifacts and archival materials for historic purposes, as well as to conduct historical research and to host educational activities and events.

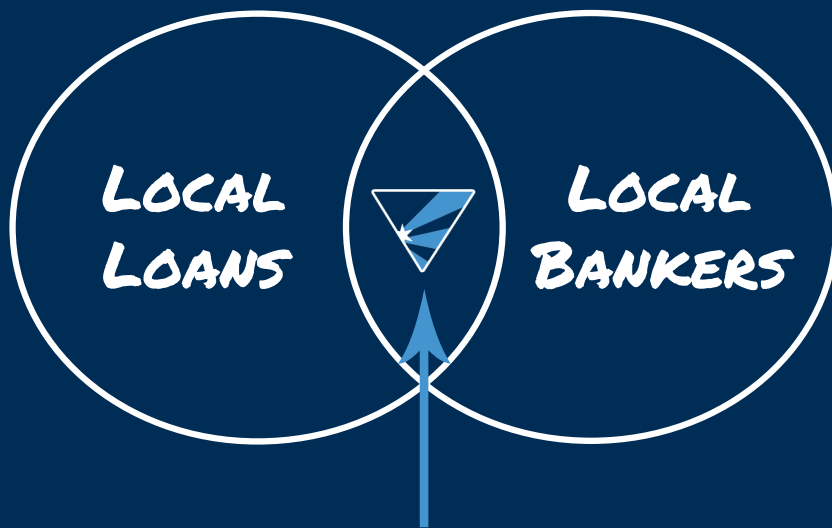
The Association currently oversees the Paul W. Klipsch library of technical journals, 5948 issues, over 400 reel to reel tape recordings, 60 feet thick of Paul W. Klipsch paper files, files consisting of literature, advertisements, newsletters and other materials used for marketing. Over 10,000 photos and slides and 1000+ museum artifacts have been cataloged as well.

Jim Hunter began work at Klipsch & Associates in the fall of 1978 as a transducer engineer. Over the next 38 years he held the positions of Transducer Engineer, Production Engineer, Design Engineering Manager, Project Manager, VP of Design Engineering, and unofficial company historian. PWK's collection of audio artifacts housed in a conference room immediately caught Jim's "collector attention" and as PWK would say, "That was like waving a bull in front of a red flag!"

Jim put the collection on steroids, as well as "sat before the master" innumerable times to absorb the man's colorful history spanning five distinct careers. He was also given free access to PWK's personal files dating to WWII.

The Paul W. Klipsch museum is located at 136 Hempstead 278, in Hope. In addition, there are three other locations in Hope. The Hope Airport "Steam Generating Building" from the WWII proving grounds days has been leased, and is the home of the museum's education center and PWK's library. In March of this year, the Klipsch Visitors Center opened its doors to the public. The large historic house now known as the Klipsch Visitors Center is strategically located next door to the Clinton Birthplace Home National Historic Site. Visitors and locals alike will enjoy stepping inside a powerful piece of history that pays homage to Paul W. Klipsch, an American engineer and high fidelity audio pioneer.

For more information about the Paul W. Klipsch museum, visit their website at [www.klipschmuseum.org](http://www.klipschmuseum.org), or contact their email [info@klipschmuseum.org](mailto:info@klipschmuseum.org), or to reach someone in person, call 833-794-5287. You may also visit their facebook page @klipschmuseum.



**WE ARE HERE!**

Our Hope branch is run by **local** bankers who live right here in our **local** community! With decisions made **locally**, our community bankers are ready to help with any financial needs you may have.

***Home, Auto, Agri, Personal, Business Loans & More!***

**Local Bankers.**

**Local Decisions.**

**Local Commitment.**

*Come discover the Diamond Bank difference!*



**Diamond Bank®**  
[www.diamond.bank](http://www.diamond.bank)

**Hope | 870-777-3200 | 400 S Main St.**





# HOPE PARKS & RECREATION

## PLAYGROUNDS, SPORTS, EVENT VENUES & MORE



Located in the southwest part of town, Fair Park is one of three parks in the City of Hope parks system. The first property was acquired in October 1908 for \$1,600. This was 40 acres from Mr. J. Hanegan. Since then, an additional 146+ acres has been added to Fair Park, giving a total area of almost 190 acres.

**The Coliseum and Arena** are facilities owned by the Southwest Arkansas District Fair and Rodeo and rented by the City of Hope during the times not occupied by the Fair.

**Softball/Baseball Fields-** Kelly #1, #2, and #3 at the Fair Park are softball-only fields. Kiwanis #1, #2, #3, Legion Field, and Harry Hawthorne Field (T-ball,) located at the Fair Park, are baseball-only fields. K-Park and Millennium Field at Fair Park and the Northside Park field are combination softball and baseball.

**The Mike and Janet Huckabee Lake** was built in cooperation with the Arkansas Game and Fish Commission. The 11-acre lake complex features a concrete walking trail completely around the rim of the lake,

several handicapped-accessible fishing piers, concrete lined shores, and boat ramp. The lake is divided into two sections. The main part is 10.2 acres and the smaller section is a 1 acre derby pond that can be cut off from the main lake for fishing derbys. It is located in Fair Park.

**The City of Hope RV Park**, located within Fair Park, currently has about 200 30 amp electric hookups with water. There are 20 full hookups (electric/water/sewer) for the monthly renters. Contact the Hope Parks and Recreation for rental information.

**The Swimming Pool**, located in Fair Park, is typically open for the season around Memorial Day and closes around Labor Day.

**Pavilions and Stages:** 3 Pavilions are for rent and 1 pavilion that is first come/first serve inside the Fair Park. Additionally, there are also two stages: the BancorpSouth Stage is the only one rented, whereas the CMC Stage is typically used for large events only. Call the Fair Park office for reservations. Fair Park has several

other facilities, including two playgrounds, 3 tennis courts, basketball court, and a 9-hole Disc Golf Course starting at the swimming pool parking lot.

**Northside Park** began in December 30, 1949, with 16 acres of land acquired from the Hope Civic Improvement Association, Inc. Additional lands have been purchased/donated since, giving a total area of almost 25 acres. This park has several facilities, including a baseball/softball field, playground, basketball courts, and 3 pavilions. The Northside Park Community Center is available to rent.

**The City of Hope Soccer Complex** is located on State Hwy. 174 South (Spring Hill Drive) just past the intersection with West 16th Street. This facility includes four lighted soccer fields, a skateboard park, pavilion, bathrooms, and concession stand. A couple of the fields are also used for youth football.

### PARKS & RECREATION — OFFICE —

PHONE: (870) 777-7500  
FAX: (870) 722-2533

[tourism@hopearkansas.net](mailto:tourism@hopearkansas.net)

HOURS M-F: 8AM - 5PM

OFFICE LOCATION:  
800 S Mockingbird Ln.  
Hope, AR 71801

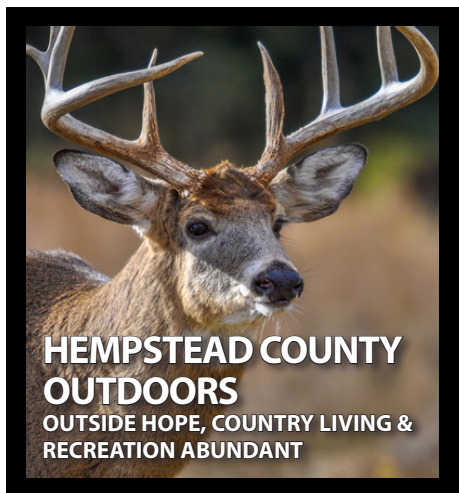
MAILING: P.O. Box 596  
Hope, AR 71802

## Boll Weevil & Cotton Patch

Your Best & Closest Choices to Hope for Beer, Wine & Spirits



Just Across the Red River Bridge on Hwy 67 S. in Fulton  
Boll Weevil: 870-896-2337 (Beer) Cotton Patch: 870-896-2222



#### MILLWOOD STATE PARK

One of the best lakes in the state of Arkansas sits in Hempstead County's backyard, making Millwood Lake a "tree- filled" fishing haven. Famous for bass tournaments, this 29,260-acre lake abounds in largemouth, catfish and crappie. Many trophy fish of over 10 pounds have been recorded, and 4 and 5 pound catches are common. Spring and fall offer anglers great crappie fishing here, and catfish and bream fishing in summer. Facilities include 116 campsites: (113 including Preferred B, Standard B and three tent sites), picnic sites, a standard pavilion, self-guided nature trail and bicycle trail.

A marina offers souvenirs, gift items, groceries, bait, gas, fishing boats, canoes, pedal boats and hydro bikes. Slip rentals are available year round. Marina: (870) 898- 5334.

From junction 1-30 and U.S. 71 at Texarkana, travel 16 miles north on U.S. 71 to Ashdown, then go nine miles east on Ark. 32 to the park. Hunting is allowed in some areas around the lake, but not within 300 yards of any developed recreation area or structure, including dams and levees. Duck blinds are permitted but must be temporary and removed within one week at the end of the season. No permit is required.

In addition to the lake, an 824-acre park is located on Mill-wood Lake. Each site has a picnic table and grill, and modern bathhouse with hot showers are located throughout the campgrounds. Campsites with no hookups are available. A trailer sanitary station is nearby. Contact: Millwood State Park Visitor Center: (870) 898-2800 - Marina: (870) 898-5334.

#### HUCKABEE LAKES

The Mike and Janet Huckabee Lake continues to be significant for numerous years, which is located in Hope at Fair Park. The 30 million-gallon, 11-acre lake is nestled in a wooded area on a 15 acre site and is divided into two separate pools. The larger pool has an island and the lake boasts a boat ramp along with 10 wooden fishing piers scattered around the lake's perimeter. The Lake also features a walking/running path just under a mile in length around both pools on top of the levy which will be lighted in the near future to allow both fishing and strolling at night. A number of fishing derbys for the youth are held at the lake as well as fishing classes run by the city and state game commission annually. Contact: 870-777-7500.

#### SITZES/BOIS D'ARC WMA

Lester Sitzes III/Bois D'arc is located in Hempstead County, 16 miles south of Hope. This 13,626-acre area is composed of 5866 acres of State owned land and 7760 acres leased from International Paper and Potlatch timber companies. The area was established as a WMA in 1950's, The primary objective of this management area is to provide quality wildlife habitat and public hunting opportunities. The area consists primarily of bottomland hardwood habitats. This includes a 660 acre Greentree waterfowl area.

The lake went under reconstruction several years ago and is nearly back to normal levels. The lake had non-game fish removed and is being restocked with bass, blue gill, red ear, channel catfish and crappie. The Little Grassy Duck Area is a 150 acre moist-soil management unit. A system of levees and water control structures facilitate inundating the area for waterfowl habitat.

A forest management system provides excellent wildlife habitat. Bois d' Arc Lake and the associated creeks and sloughs are also home to the American alligator. To get there take Hwy. 29 south out of Hope approx. 6 miles, take Hwy. 355 west toward Spring Hill, then follow Hwy. 355 into the area.

The west side of the area can be accessed from Hwy. 67 west of Hope. Hunting includes waterfowl, deer, quail, turkey, squirrel, and rabbits. See current regulations for seasons and permit requirements. Primitive camp sites are available around the lake and on the west side of the WMA.

Red Slough Waterfowl Rest Area closes to access early part of November and will reopen

to access in mid February. It is open to archery deer hunting in October to November.

Dr. Lester Sitzes III Bois D'Arc Lake is closed to hunting (fishing and non-hunting activities are allowed).

Boats are not allowed on the greentree waterfowl area 14 days before waterfowl season opens. Boat motors larger than 25 horsepower and airboats may not be used (except for Dr. Lester Sitzes III Bois d'Arc Lake). Boats are not allowed from 1 p.m.- 4 a.m. during duck season (including opening days of season segments), except on Dr. Lester Sitzes III Bois d'Arc Lake. Nonresident waterfowl hunters need a Nonresident Wildlife Management Area Waterfowl Hunting Permit. Boat ramps are located on Bois d'Arc Lake at Kidds Landing and Hatfield Landing.

For district information Contact: Jeffrey Taverner, Private Lands Biologist Wildlife Management Division (Office) -870-777- 5580, (Mobile) 870- 331-7653, (Fax) 870-777- 3032.

#### GRANDVIEW WMA

The Rick Evans Grandview Prairie Wildlife Management Area and Education Center is located in Hempstead County, two miles north of Columbus. Contact: 1-877-777-5580 This 4,885 acre multi-use area is owned by the Arkansas Game and Fish Commission and was established in 1997.

Prior to state control the site was both a cattle ranch and a hunting preserve. This multi-use area is managed for the protection, enhancement, and restoration of the blackland prairie. The area also consists of two lakes 30 and 77 acres in size. A specially stocked pond is reserved for fisherman aged 16-65. Grandview is home to a larger number of birds and other wildlife. Grandview Prairie represents the largest, contiguous tract of blackland prairie in public ownership in the nation. Deer, small game, and furbearers can be hunted.

The area is known for it's high quality white-tailed deer herd. See current regulations for seasons and permit requirements. It is unlawful to take or attempt to take water-fowl or to guide waterfowl hunters on Bayou Meto WMA without first obtaining a free Bayou Meto Wildlife Management Area Waterfowl Hunting and Guiding Permit which must be signed and in possession while hunting or guiding hunters.

For more hunting season dates and outdoor information in Southwest Arkansas, log on to [www.agfc.com](http://www.agfc.com)



#### GREETINGS FROM THE DAWN OF HIFI

In 1946, inventor Paul W. Klipsch changed the audio industry forever by proving that it was possible to bring dynamic, realistic sound to the home. As an American audio pioneer and a proud member of the Engineering and Science Hall of Fame, Klipsch left an amazing legacy for you to discover. The Klipsch Museum of Audio History is a STEM-based non-profit dedicated to preserving and sharing Klipsch's technological discoveries, artifacts, and principles.

VISIT US ONLINE TO JOIN THE CONVERSATION!

[facebook](https://www.facebook.com/klipschmuseum)

[YouTube](https://www.youtube.com/klipschmuseum)

[klipschmuseum.org](http://klipschmuseum.org)







Wadley Regional Medical Center at Hope (Wadley-Hope) has been serving the people of Hempstead County and the surrounding region for many years.

Offering a wide array of both inpatient and outpatient services, the staff is dedicated to providing the best possible care to their patients. Offering care for all ages, Wadley-Hope has a 24-hour emergency room; full lab capabilities; diagnostic imaging procedures including MRI, CT Scan, general X-Ray, screening mammography and dexascan for osteoporosis screening; physical therapy and respiratory services.

Also available is a geriatric inpatient behavioral health unit, Golden Care, that provides services to those 55 and older. Wadley-Hope is conveniently located at 2001 South Main Street and is licensed for 79 beds. It is a Medicare

approved facility and accredited by DNV Healthcare, the only hospital accreditation program approved by the US Centers for Medicare and Medicaid Services (CMS) that integrates the ISO 9001 Quality Management System with the Medicare Conditions of Participation (CoP).

Customer service is the foundation for the care provided at Wadley-Hope. Taking care of not only the physical needs of the patients, but also the social needs is paramount. Meeting the needs of the patients' family members is an integral part of the care given. Assisting the hospital is a small group of faithful volunteers who give of their time and support to operate the Wadley Gift Shop, open to visitors and staff members.

Wadley-Hope is a major employer in the city of Hope and continually

seeks ways to be a good community partner. Contributing the overall economy of the region through salaries, benefits and taxes paid, the hospital also provides a significant amount of uncompensated care while sponsoring and participating in local health fairs and community events.

In an effort to increase access to primary care services, the Wadley Rural Health Clinic is conveniently located near the hospital. The clinic is staffed by two family practice physicians and a nurse practitioner. The Rural Health Clinic is accepting new Medicare and Medicaid patients. Family Medicine Specialists is another primary care clinic associated with Wadley-Hope and is staffed by a family practice physician and two nurse practitioners.

Serving the community for many years, this practice accepts new patients as well as working with local businesses to address their needs.

Wadley at Hope is associated with Wadley Regional Medical Center in Texarkana, Texas, just 30 miles down 1-30 West. When extended care is needed, patients have access to specialty services such as Texarkana's first designated stroke center, experienced maternity care, a dual state designated Level III Trauma Center, surgical services and cardiac services through Wadley Regional Medical Center in Texarkana.



**400 W. 23rd St. Hope, AR | (870) 777-3448**

**24 hour skilled facility in a country atmosphere located within minutes of our local hospital.**

**Occupational, Physical and Speech Therapy, Short-Term Medical Care, Rehab Facility, Spacious Living and On-Site Security.**






## UAHT PROFILE

The University of Arkansas Hope-Texarkana (UAHT) seeks to connect students and community partners to quality academic and technical education, beneficial student support services, customized business and industry training, community development endeavors, and prevailing educational opportunities. Whether you are a recent high school graduate or returning to college after spending years in the workforce, UAHT is your bridge to the future. Your educational goals and dreams can become a reality through an affordable, quality education at UAHT. The college has the most affordable tuition in Arkansas and offers students a world-class University of Arkansas System education.

UAHT offers students the first two years of a traditional college education, transferable to a four-year university, as well as a variety of certificate programs to prepare students for high-demand technical fields. Employees of local businesses and industries can participate in training opportunities to upgrade job skills. Students may also take advantage of several partnership programs offered through various four-year universities to transition seamlessly into their bachelor's degree program of study. Adult education options are also available for those seeking to earn their General Education Development (GED) certificate.

The college also offers a variety of programs for students to earn college credit while still in high school, including the Hope Collegiate Academy High School, the Secondary Career and Technical Education Center, and general concurrent credit courses. The Hope Collegiate Academy allows students to earn a high school diploma and an Associate Degree simultaneously. The student body consists of

high school sophomores, juniors, and seniors enrolled in dual-credit courses on the U of A Hope campus. The Secondary Career Center provides area high school juniors and seniors with the unique opportunity to earn college credit while still in high school at no charge. The center's curriculum serves as an extension of the high school curriculum offerings by providing students with hands-on experiences in a variety of career fields taught by UAHT Faculty on the college campus. General concurrent credit courses offer high school students the opportunity to earn college credit either on the college campus or from their public school campus.

## PERSONAL TOUCH

The University of Arkansas Hope-Texarkana is proud of its reputation for excellence in teaching and the personal attention given to students. From the college's Board of Visitors and administration to the support staff, each area of the campus places students at the center of its mission. UAHT instructors strive to provide the personal touch students are not likely to find at a larger institution.

Academic foundation courses and quality student services are available for those who need an extra boost before enrolling in academic classes or for non-traditional students returning to school after years in the workforce. Instructors and staff at the college work hard to help students achieve their educational goals.

## HISTORY OF SUCCESS

Since the establishment of the college in 1965 as a vocational-technical school, UAHT has celebrated over 50 years of student success that continues today. Last year, UAHT set a record enrollment of 1,563 students. Added to this success, the number of unduplicated graduates at UAHT has risen each year over

the past five years. The number of graduates has increased by a total of 69% and the total number of degrees and certificates awarded has risen by 52% from just five years ago. These increases have moved UAHT from number nineteen in unduplicated headcount among twenty-two Arkansas 2-year colleges in 2007 to number ten.

Employers report that UAHT graduates have excellent critical thinking skills and are workforce-ready. UAHT graduates permeate the region as local business owners and area business and industry managers. Technical and industrial graduates of the college learn in-demand skills that match the needs of employers today, and they receive numerous opportunities for employment from area business and industry. Students can earn a variety of technical and industrial degrees and certificates, including Power Technologies, HVAC, Diesel Technology, Welding, Industrial Maintenance, Industrial Electricity, and more.

UAHT is one of the region's leading providers in health professions education. The Licensed Practical Nursing program is one of the most sought out nursing programs in the region. UAHT partners with the Arkansas Rural Nursing Education Consortium (ARNEC) to provide students with an LPN/LVN to RN transition program to continue their education. The college also offers a variety of other health professions programs, including Funeral Service Education, EMT/Paramedic, CAN, Medical Lab Tech, Surgical Scrub Tech, and more.

The college provides students with a variety of online, hybrid, night, and evening courses to meet the demands of busy schedules.

- Continues on page 23



Many degrees and certificates can be earned completely online, including an Associate of Arts in General Education online degree.

Students at UAHT can take advantage of numerous financial aid and scholarship opportunities. The college offers multiple institutional scholarships and over 120 privately funded Foundation scholarships. Combined with the affordable tuition at UAHT, these scholarships effectively eliminate the financial barrier many students face in attaining a college degree.

#### THE COLLEGE CAMPUS

With campuses in Hope and Texarkana, Arkansas, UAHT is positioned to offer quality education to every student in our service area. The Hope campus is set among a stand of majestic oak and pine trees on a beautiful 72-acre tract in the heart of Southwest Arkansas. The Hope campus offers students state-of-the-art educational facilities with the

latest technologically advanced equipment to prepare students to transfer or for the workforce. U of A Hope is located at 2500 South Main Street in Hope, Arkansas.

The Johnny Rapert Library on the Hope campus also houses the Hope Collegiate Academy High School, which is a partnership



with the Hope Public School District that offers high school students the opportunity to earn a high school diploma and an Associate Degree simultaneously. For more information, visit [uaht.edu/hope-collegiate-academy](http://uaht.edu/hope-collegiate-academy).

In 2012, the college opened the U of A Texarkana campus. The 22-acre Texarkana campus the Texarkana Campus Center Building and the new 19,000 square foot Professions Building. The Texarkana campus is located at 3501 U of A Way in Texarkana, Arkansas.

Last year, the college expanded to offer a program unique to the University of Arkansas System by opening a bladesmithing school in Historic Washington, Arkansas. The James Black School of Bladesmithing and Historic Trades celebrates, preserves, and promotes the art of bladesmithing and historic trades, and the birth of the iconic Bowie Knife in Historic Washington. Students at the school study the art and science of Bladesmithing, Forging, Handles and Guards, Damascus Steel, and more.

For more information about all of the opportunities that UAHT has to offer, call 870-777-5722 or visit [uaht.edu](http://uaht.edu).

## ALSO ON THE CAMPUS OF UAHT: HEMPSTEAD HALL



Hempstead Hall, a multipurpose community conference center/auditorium based on the UA Hope campus, opened in 2013 and in a short time, has become a premier entertainment venue for all of southwest Arkansas. Over the past four years, the facility has hosted such world-class acts as the Little River Band, Travis Tritt, Sara Evans, Charlie Daniels, Lorrie Morgan, 38-Special, Trace Adkins, the Oak Ridge Boys, the Temptations, the Spinners, Clint Black, Ronnie Milsap as well as the Arkansas Symphony Orchestra, the annual Hope/Hempstead County Chamber of Commerce banquet and membership meeting, and hundreds of conferences, banquets, dinners, awards events and area graduations. Custom designed by Little

Rock architects, Hempstead Hall is a massive 64,000 square feet with 7,568 dividable square feet, and it features main theater seating for 1,600, banquet seating for 800, an outdoor amphitheater and dividable conference seating for small groups or large groups up to 1,200. Indoors the facility features a full performance concert stage, a commercial kitchen, and being on the UA Hope campus, includes hundreds of parking spaces. Over 24,000 guests visit Hempstead Hall annually attending shows, graduations, civic club luncheons, or special events. Hempstead Hall is also a public venue available to rent for a variety of events from Arkansas conventions and professional conferences to local school functions and job training.





## HISTORIC WASHINGTON STATE PARK

### FORMER STATE CAPITOL THRIVES AS A POPULAR VISITOR'S STOP



## PAFFORD

### HEALTH SYSTEMS

### Medical Clinic

Your **HEALTH** is  
our **PRIORITY**

100 East 20th Street  
Suite D  
Hope, AR 71801  
870.729.1911

*Our Team is here to assist you  
with all your healthcare needs.*

Nicole Black, FNP-C  
Susan Phillips, FNP-C  
Joan McLean, ANP-BC



## WASHINGTON'S HISTORY

Sam Houston, Davy Crockett, and Jim Bowie each traveled through Washington before they fought for Texas independence. While in Washington, Bowie commissioned local blacksmith James Black to make a Bowie knife. Through the 1840s, Cherokee and Choctaw Indians travelled through Washington on their way to Indian Territory (present-day Oklahoma) due to the policy of Indian Removal. During the state's early years, Washington was a thriving community and a major service center for area farmers and plantation owners. It was situated on the Southwest Trail, a major commercial route, and was also the county seat of Hempstead County. During the Civil War, the Confederate government of Arkansas fled from Little Rock to Washington. The 1836 Hempstead County Courthouse in Washington served as the state capitol from 1863 to 1865.

## RESTORATION AFTER DIVISION

In 1929, the United Daughters of the Confederacy secured money from the state legislature to fund the restoration of the 1836 Hempstead County Courthouse. In 1958, a group of Washington citizens formed the Pioneer Washington Restoration Foundation to preserve the town's old structures and operated tours of some of the historic homes for fifteen years.

In 1973, the foundation donated property, buildings, and antiques, and Old Washington Historic State Park became the thirty-fourth Arkansas state park.

## TODAY IN WASHINGTON

In September, 2006, the park's name was changed to Historic Washington State Park. The park offers guided tours of historic homes and structures, museums, and interactive and living history programs.

The park hosts several special events annually, including the Five- Trails Rendezvous in February and the Jonquil Festival in March. In November, visitors converge on the park for Civil War Weekend, and in December, the entire park is decorated in traditional nineteenth-century decorations for the Christmas and Candlelight celebration.

Historic Washington State Park is open all year from 8 a.m. until 5 p.m. daily and is closed only on Thanksgiving, Christmas Day and New Years Day. Throughout the year, special events are hosted by the park, including Shakespeare in the Park in the WPA-era gymnasium, and weekend concerts on the lawn of the 1874 courthouse in the summer at announced times; and, the historical production, "Trial By Jury," which recreates the first murder trial conducted in Hempstead County, also at announced times.

Washington's William's Tavern Restaurant serves Thanksgiving day buffet and southern-style lunches from 11 a.m. to 3 p.m. daily throughout the year. Located on US Highway 278, the park is nine miles north of Hope from Exit 30 off Interstate 30. For more information visit - [www.HistoricWashington-StatePark.com](http://www.HistoricWashington-StatePark.com) or call (870) 983-2684.





## JAMES BLACK SCHOOL OF BLADESMITHING & HISTORIC TRADES

The University of Arkansas Hope-Texarkana (UAHT) launched the new James Black School of Bladesmithing and Historic Trades in 2020 to celebrate and preserve the art of bladesmithing and the birth of the famous Bowie Knife in Arkansas. In 1831, James Black crafted the original Bowie knife in Washington, Arkansas. The result was that Washington, Arkansas, and Black became almost immediately famous for producing what is now recognized as the official blade of the State of Arkansas and the National American Blade. The James Black School celebrates, preserves, and promotes the art of bladesmithing and historic trades, and the birth of the iconic Bowie Knife in Historic Washington. Students at the school will study the art and science of Bladesmithing, Forging, Handles and Guards, Damascus Steel, and more.

UAHT will operate the James Black School from the college's beautiful and historic facility in Historic Washington. The college offers a Certificate of Proficiency in Bladesmithing and non-credit bladesmithing courses. Bladesmithing is the art of making blades for knives, swords, and daggers by using a forge, hammer, anvil, and other smithing tools. The courses in the program will include Introduction to Bladesmithing, Intermediate Bladesmithing, Knifemaking,

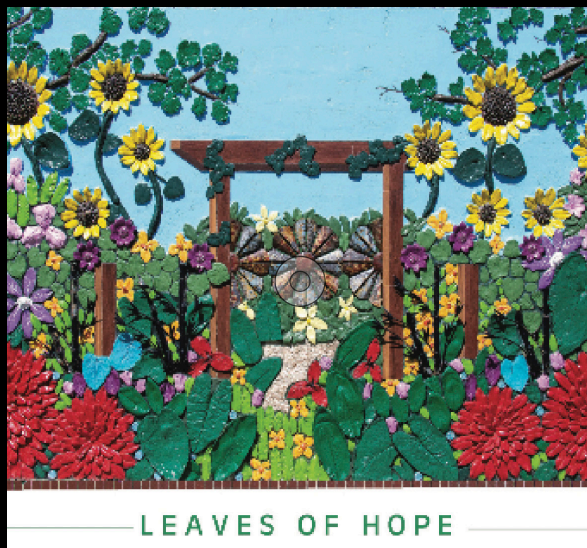
Handles and Guards, Damascus Steel, and Advanced Bladesmithing.

The James Black School of Bladesmithing and Historic Trades is unique in the University of Arkansas System and reflects the same quality and commitment to excellence in student learning that is the centerpiece of the missions of both the University of Arkansas Hope-Texarkana and the University of Arkansas System.

The James Black School is located at Historic Washington State Park, 601 Lawrence Street, Washington, Arkansas. For more information, call 870-722-8172 or visit [uaht.edu/bladesmithing](http://uaht.edu/bladesmithing).







## SOUTHWEST ARKANSAS ARTS COUNCIL

REGIONAL ORGANIZATION PROMOTES ARTISTS, CULTURAL EVENTS & CONCERTS

The Southwest Arkansas Arts Council, founded in 1986, operates as one of Hempstead County and the surrounding area's primary sources for cultural enhancement. SWAAC -- the Arts Council -- sponsors a wide variety of educational opportunities, as well as cultural experiences, and as a venue for artistic expression by local artists.

The aesthetic intent of the Arts Council is to bring exciting and vital arts experiences to the community. The Arts Council operates on one mission -- to enrich the community through experience, expression and education in the arts.

The Arts Council sponsors 10 to 15 Artist in Education residencies each year in area schools, designed to

strengthen student language, literacy, math and science skills through arts activities. Area school children use art to process, synthesize, analyze, and evaluate -- all higher level learning skills.

As a downtown Hope entity, the Arts Council offers artists gallery space to showcase their talents. Gallery shows include local and regional professional and amateur artists, exhibiting their works in such genres as painting, photography, mosaics, and woodworking.

In partnership with Hempstead Hall on the Hope campus of the University of Arkansas, the Arts Council brings world-class programming to Southwest Arkansas. Program series shows have included everything from

the Arkansas Symphony to live, on-stage, ice skating.

Audiences have opportunities to experience top recording concert artists, live and on stage. The loyal support of our members helps SWAAC to continue programming that strengthens our community and enriches lives. Member benefits include discounts on tickets, workshops and classes, invitations to gallery exhibit opening receptions, monthly newsletter, members only events, notification of preferred customer ticket sales, tax deduction as allowed by the IRS. Student, Individual, Family and Business levels are available. To join or for more information, email [swaac13@gmail.com](mailto:swaac13@gmail.com) or call 870.777.8200.





History · Hospitality · Hope · Home



Welcome to  
**HOPE & HEMPSTEAD COUNTY**  
Hope Tourism Commission

Paid for by the Hope Tourism Commission



We're at the

Center

of it all



Conferences



Concerts



Community Events

## HOMETOWN VENUE. WORLD-CLASS EXPERIENCE

From local and state conferences to Grammy-winners and everything in between, there is always something happening at Hempstead Hall.

We offer more than just a state-of-the-art 65,000 square-foot modern venue. Our planning team will help bring your event to life and make you feel right at home.



HEMPSTEAD  
HALL

Conference, Community  
& Performing Arts  
Center

FOR THE LATEST NEWS, VISIT: [hempsteadhall.com](http://hempsteadhall.com)

*on the beautiful U of A Hope campus*

2500 South Main Hope, AR



870.722.8565